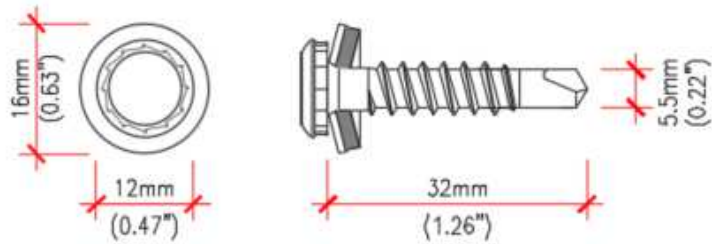


## Fachadas Ventiladas com painéis Viroc - Estrutura de Alumínio

Parafusos e rebites para fixação dos painéis Viroc

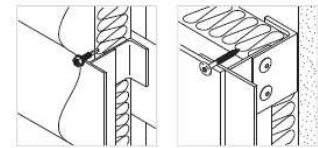
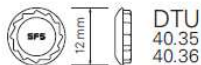
Painéis de 12 mm de espessura

SX3/15-L12-S16-5.5x32



### Application

Stainless steel fastening of steel / aluminium sheet or façade panels to steel or aluminium structure in one operation: drilling, thread forming and sealing.

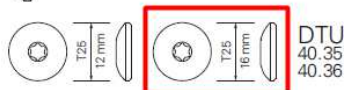
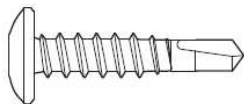


Product code	article number	VD	KL	d x L	PU	notes
SX3/15-L12-S16/1-5,5X32	1403191	3	15	5,5X32	250	

SX3/15-D16-5,5x30

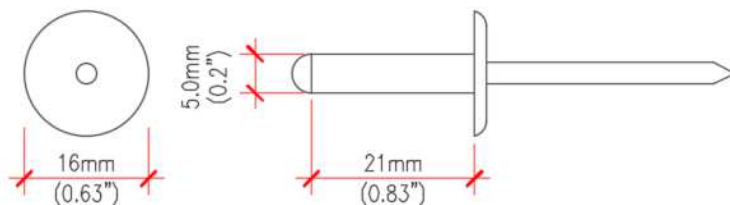
### Application

Stainless steel fastening of steel / aluminium sheet or façade panels to steel or aluminium structure in one operation: drilling, thread forming and sealing.



Product code	article number	VD	KL	d x L	PU	notes
SX3/15-D12-5,5X30	1403193	3	15	5,5X30	250	
SX3/15-D16-5,5X30	1270106	3	15	5,5X30	250	

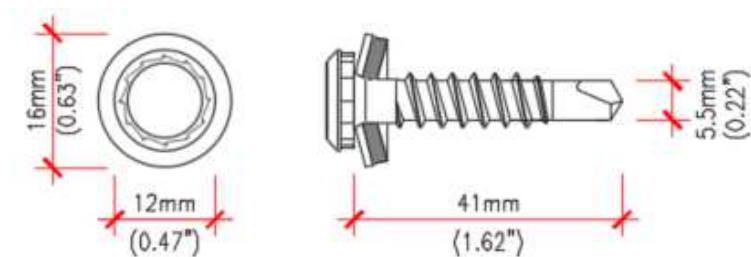
Rebite AP16-S-5x21



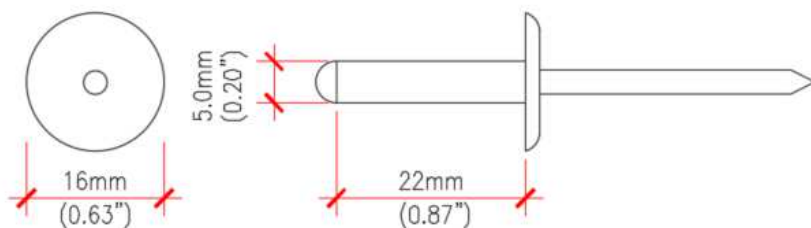
Acessório: Nosepiece a colocar na rebitadora, utilização obrigatória

Painéis de 16mm de espessura

SX5-L12-S16-5.5x41

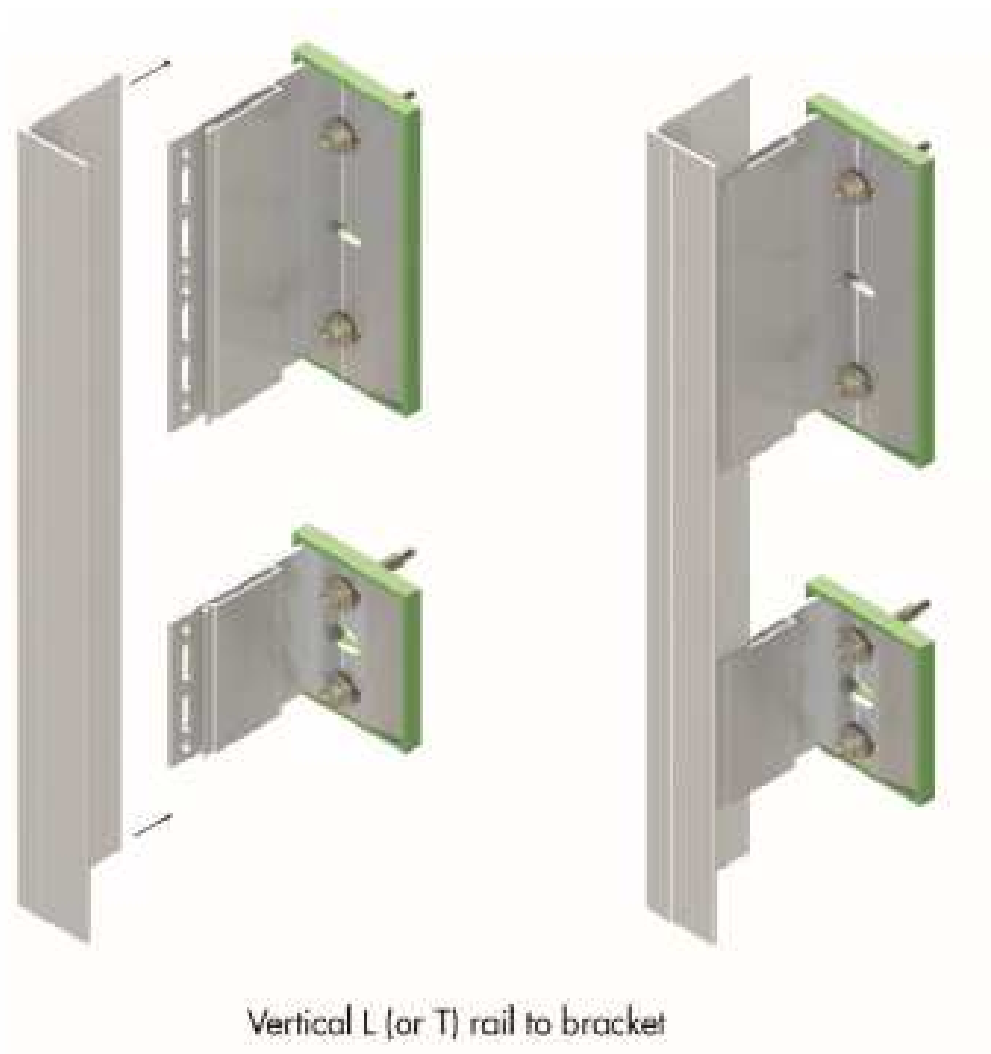


Rebite SS0-D15-5x22



Acessório: Nosepiece a colocar na rebitadora, utilização obrigatória

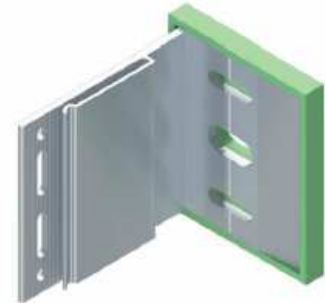
Estrutura de suporte



## Esquadros

**Table 1 Aluminium NV Bracket — single (75 mm) — design resistances (for bracket out-stand leg)**

Bracket leg length (A) <sup>(1)</sup> (mm)	Projection range <sup>(2)</sup> (mm)	Code	Design resistance (kN) <sup>(3)(4)</sup>	
			Vertical (shear)	Horizontal (axial)
40	47 – 67	NV-VB040S	2.45	2.68
60	62 – 102	NV-VB060S	1.34	1.92
90	92 – 132	NV-VB090S	1.11	1.47
120	122 – 162	NV-VB120S	0.98 <sup>(5)</sup>	1.11 <sup>(5)</sup>
150	152 – 192	NV-VB150S	0.84 <sup>(5)</sup>	0.89 <sup>(5)</sup>
180	182 – 222	NV-VB180S	0.67	0.71 <sup>(5)</sup>
210	212 – 252	NV-VB210S	0.54	0.62
240	242 – 282	NV-VB240S	0.45	0.58
270	272 – 312	NV-VB270S	0.36	0.54 <sup>(4)</sup>
300	302 – 342	NV-VB300S	0.22	0.49



**Table 2 Aluminium NV Bracket — double (150 mm) — design resistances (for bracket out-stand leg)**

Bracket leg length (A) <sup>(1)</sup> (mm)	Projection range <sup>(2)</sup> (mm)	Code <sup>(3)</sup>	Design resistance (kN) <sup>(4)(5)</sup>	
			Vertical (shear)	Horizontal (axial)
40	47 – 67	NV-VB040D	3.57	4.01
60	62 – 102	NV-VB060D	3.34	2.90
90	92 – 132	NV-VB090D	2.68	2.50
120	122 – 162	NV-VB120D	1.03 <sup>(6)</sup>	2.31 <sup>(6)</sup>
150	152 – 192	NV-VB150D	1.21 <sup>(6)</sup>	2.10 <sup>(6)</sup>
180	182 – 222	NV-VB180D	0.79 <sup>(6)</sup>	1.78
210	212 – 252	NV-VB210D	0.66 <sup>(6)</sup>	1.47
240	242 – 282	NV-VB240D	0.58 <sup>(6)</sup>	1.29
270	272 – 312	NV-VB270D	0.48 <sup>(6)</sup>	1.16
300	302 – 342	NV-VB300D	0.45 <sup>(6)</sup>	1.03

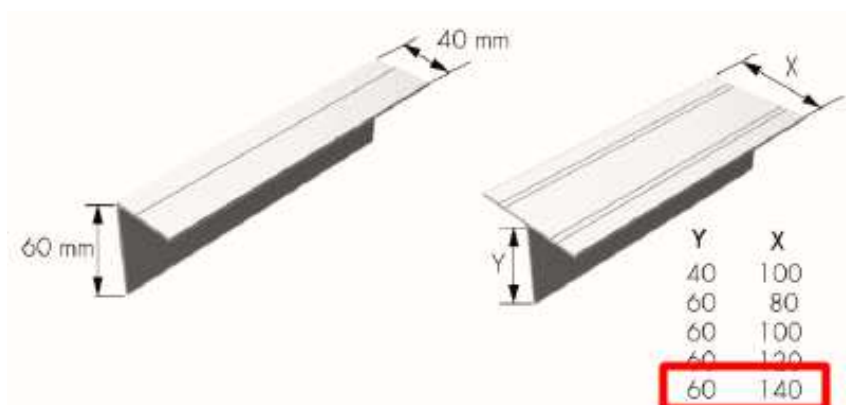


Ancoragem (esquadro-suporte)

SXR-10-80-FUS-A, (1 un/esquadro)



Perfis L e T de alumínio



Type	Dimensions	Material number
L Profile	60 x 40 x 2.2 x 3000	1521357
L Profile	60 x 40 x 2.2 x 3600	1521365
L Profile	60 x 40 x 2.2 x 4850	1521370
L Profile	60 x 40 x 2.2 x 6000	1521375
T Profile	40 x 100 x 2.2 x 3000	1521413
T Profile	40 x 100 x 2.2 x 6000	1521417
T Profile	60 x 100 x 2.2 x 3000	1521423
T Profile	60 x 100 x 2.2 x 4850	1521431
T Profile	60 x 100 x 2.2 x 6000	1521434
T Profile	60 x 140 x 2.2 x 3000	1521445
T Profile	60 x 140 x 2.2 x 6000	1521447

Parafusos (esquadro-perfil)

SDA5/5.5x22, (2 un/esquadro)



Rebite (esquadro-perfil), alternativa

ASO-D11-5x12, (2 Un/esquadro)

## Bucha plástica (isolamento-suporte)

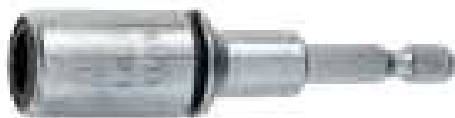


d diameter | L overall length | SD Setting depth | All measures in mm

		Order code					
		<b>MDH- 8,0x 60</b>					
Applications	Product	Type	d	L	SD	Application range	
						<ol style="list-style-type: none"> <li>1. Drill a pilot hole</li> <li>2. Set plug until head lies flush on insulation</li> <li>3. Use a hammer for installation</li> <li>4. MDH has to be hammered precisely onto insulation</li> </ol>	
		● Plastic	MDH-	8,0x	60		20
			MDH-	8,0x	80		20
			MDH-	8,0x	100		20
			MDH-	8,0x	120		20
			MDH-	8,0x	140		20
			MDH-	8,0x	160		20
			MDH-	8,0x	180*		30
			MDH-	8,0x	200*		30
			MDH-	8,0x	220*		30
			MDH-	8,0x	240*		30
				* two pieces			

## Acessórios

Chave E420 para os parafusos de cabeça irius.



Nosepiece - Limitador de aperto de rebites, utilização obrigatória.



### Ferramenta para centrar furos



**d** diameter | **L** Length | **f** flute length | **t** thickness of structure | **All measures in mm**

Example order code			Application range
Type	L	Nose	
DG-	146x20-	7,0	<p>Can be used with all cordless screw drivers available on the market.</p>
DG-	146x20-	8,0	
DG-	146x20-	9,0	
DG-	146x20-	10,0	

### Chave para centrar parafusos com diâmetro 5,5 mm, ZL-SX/SD-5,5/8,0



### Chave para centrar furos com diâmetro 5,1 mm, ZL-5,1/7-18



## Perfil auxiliar de angulo

		PFS-K-A- 10/10				
Application	Product	Type	axb	KL	Application range	
	▲ Aluminium	PFS-K-A-	10/10	≤ 10	Length of the profile: L = 2,8 m Thickness: e = 0,8 mm	
			18/18	≤ 18		
			29/29	≤ 29		
			40/40	≤ 40		

PFS-K-Aluminium



		PFS-Q-A- 10/10				
Application	Product	Type	axb	KL	Application range	
	▲ Aluminium	PFS-Q-A-	10/10	≤ 10	Length of the profile: L = 2,8 m Thickness: e = 0,8 mm	
			18/18	≤ 18		

PFS-Q-Aluminium



		PFR-A- 10/10				
Application	Product	Type	axb	KL	Application range	
	▲ Aluminium	PFR-A-	10/10	≤ 10	Length of the profile: L = 2,8 m Thickness: e = 0,8 mm	
			15/15	≤ 15		
			18/18	≤ 18		

PFR-Aluminium





Perfil anti-roedores

PV-Aluminium



		PV-A- 30x30				
Application	Product	Type	hxl	KL	Application range	
	▲ Aluminium	PV-A-	30x30		Length of the profile: L = 2,5 m Thickness: e = 0,8 mm	
		PV-A-	30x40			
		PV-A-	30x50			
		PV-A-	30x60			
		PV-A-	30x70			
		PV-A-	30x90			
		PV-A-	40x100			
		PV-A-	40x120			
		PV-A-	40x140			
		PV-A-	40x160			
		PV-A-	40x180			
		PV-A-	40x200			
		PV-A-	40x220			
		PV-A-	40x240			
		PV-A-	40x260			
		PV-A-	40x280			
		PV-A-	40x300			



Contactos para informação e fornecimento

Portugal

Tel: +351 219 669 840 / +351 912 554 988

Email: [pt.info@sfs.com](mailto:pt.info@sfs.com)

Espanha

T: +34 946 333 120

E: [es.info@sfs.com](mailto:es.info@sfs.com)

France

T: +33 4 75 75 44 22

E: [fr.info@sfs.com](mailto:fr.info@sfs.com)

UK

T: +44 (0) 330 0555 888

E: [ukenquiries@sfs.com](mailto:ukenquiries@sfs.com)

USA

T: +1 610 376 5751

E: [us.construction@sfs.com](mailto:us.construction@sfs.com)

Canada

T: +1 905 847 5400

E: [ca.info@sfs.com](mailto:ca.info@sfs.com)

Norway

T: +47 67 92 14 40

E: [no.info@sfs.com](mailto:no.info@sfs.com)

Sweden

T: +46 152 71 50 00

E: [se.info@sfs.com](mailto:se.info@sfs.com)

Finland

T: +358 9 3154 9810

E: [fi.info@sfs.com](mailto:fi.info@sfs.com)

Nederland

T: +31 492 597 414

E: [bnl.info@sfs.com](mailto:bnl.info@sfs.com)

Polnad

T: +48 61 660 49 00

E: [pl.info@sfs.com](mailto:pl.info@sfs.com)

Italy

T: +39 0434 995 1

E: [it.info@sfs.com](mailto:it.info@sfs.com)

Germany

T: +49 6171 700 20

E: [de.info@sfs.com](mailto:de.info@sfs.com)

Czech Republic

T: +420 481 354 4111

E: [cz.construction@sfs.com](mailto:cz.construction@sfs.com)

Estonia

T: +372 6610 600

E: [ee.info@sfs.com](mailto:ee.info@sfs.com)