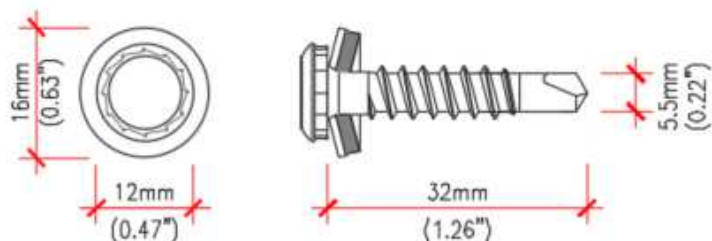


Fachadas Ventiladas com painéis Viroc - Estrutura de Aço Galvanizado

Parafusos e rebites para fixação dos painéis Viroc

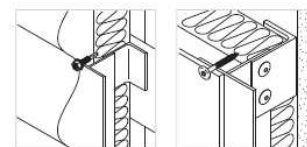
Painéis de 12 mm de espessura

SX3/15-L12-S16-5.5x32



Application

Stainless steel fastening of steel / aluminium sheet or façade panels to steel or aluminium structure in one operation: drilling, thread forming and sealing.

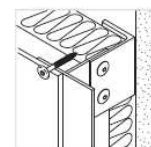
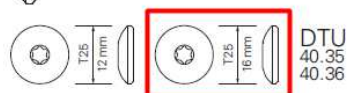
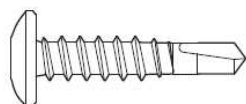


Product code	article number	VD	KL	d x L	PU	notes
SX3/15-L12-S16/1-5,5X32	1403191	3	15	5,5X32	250	

SX3/15-D16-5,5x30

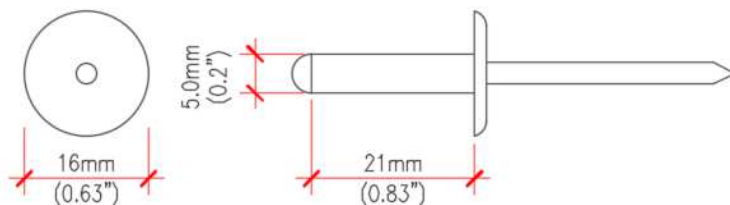
Application

Stainless steel fastening of steel / aluminium sheet or façade panels to steel or aluminium structure in one operation: drilling, thread forming and sealing.



Product code	article number	VD	KL	d x L	PU	notes
SX3/15-D12-5,5X30	1403193	3	15	5,5X30	250	
SX3/15-D16-5,5X30	1270106	3	15	5,5X30	250	

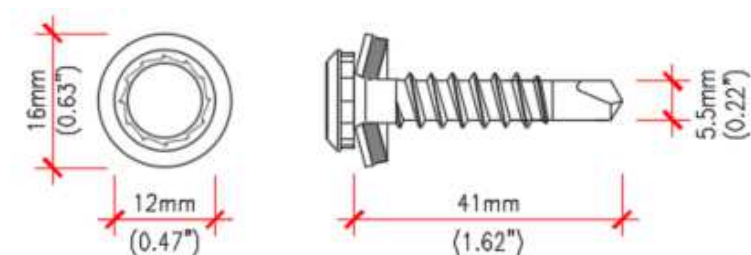
Rebite AP16-S-5.0x21



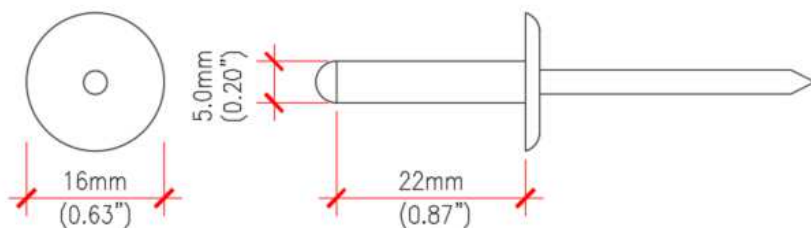
Acessório: Nosepiece a colocar na rebitadora, utilização obrigatória

Painéis de 16mm de espessura

SX5-L12-S16-5.5x41



Rebite SS0-D15-5x22



Acessório: Nosepiece a colocar na rebitadora, utilização obrigatória

Estrutura de suporte

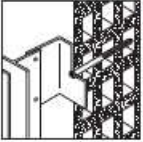


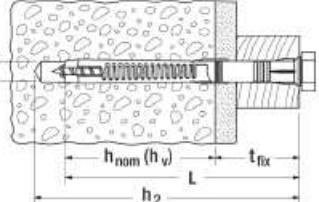
Esquadros



		B 50-T			
Application	Product	Type	L	KL	Application range
	<p>■ Carbon steel</p>	B	50-T		<p>Fixed width A of 50 mm Length L, variable from 50 to 300 mm Fixed height H of 60 mm</p> <p>8,5x30 mm and 8,5xL mm slot holes Holes dia Ø 6,5</p>
		B	60-T		
		B	70-T		
		B	80-T		
		B	90-T		
		B	100-T		
		B	110-T		
		B	120-T		
		B	130-T		
		B	140-T		
		B	150-T		
		B	160-T		
		B	170-T		
		B	180-T		
		B	190-T		
		B	200-T		
		B	210-T		
		B	220-T		
		B	230-T		
		B	240-T		
		B	250-T		
		B	260-T		
		B	270-T		
		B	280-T		
		B	290-T		
		B	300-T		

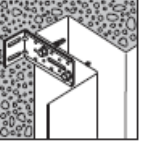



Ancoragem (esquadro-suporte)

FUR-10,0x80-SS (1 un/esquadro)

Application	Product	Approval	Order code				t_{fx}	h_v	Application range
			Type	d	L				
 ■ Carbon steel  			FUR-	8,0x	80-SS	10	90	Anchoring depth h_{nom} min. 70 mm embedment  Drill bit for concrete: Ø 8mm: SDS4-Plus-8xL Ø 10mm: SDS4-Plus-10xL	
			FUR-	8,0x	100-SS	30	110		
			FUR-	8,0x	120-SS	50	130		
			FUR-	10,0x	80-SS	10	90		
			FUR-	10,0x	100-SS	30	110		
			FUR-	10,0x	115-SS	45	125		
			FUR-	10,0x	135-SS	65	145		
			FUR-	10,0x	160-SS	90	170		
			FUR-	10,0x	185-SS	115	195		
			FUR-	10,0x	200-SS	130	210		
		FUR-	10,0x	230-SS	160	240			

Parafusos (esquadro-perfil)

SD 5-5,5x25 (2 un/esquadro)

Application	Product	Approval	Order code					KL	Application range
			Type	VD	HD	d	L		
 ■ Carbon steel  			SD	5-	5,5x	25	12	 VD max. steel: 5,0 mm t min. steel: 1,5 mm Assembly recommendations: 2 x SD5-5,5x25 for normal hole	

Bucha plástica (isolamento-suporte)

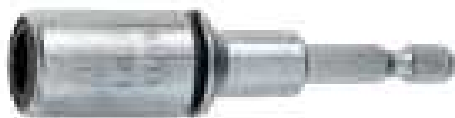


d diameter | L overall length | SD Setting depth | All measures in mm

		Order code					
		MDH- 8,0x 60					
Applications	Product	Type	d	L	SD	Application range	
						<ol style="list-style-type: none"> 1. Drill a pilot hole 2. Set plug until head lies flush on insulation 3. Use a hammer for installation 4. MDH has to be hammered precisely onto insulation 	
		● Plastic	MDH-	8,0x	60		20
		MDH-	8,0x	80	20		
		MDH-	8,0x	100	20		
		MDH-	8,0x	120	20		
		MDH-	8,0x	140	20		
		MDH-	8,0x	160	20		
		MDH-	8,0x	180*	30		
		MDH-	8,0x	200*	30		
		MDH-	8,0x	220*	30		
		MDH-	8,0x	240*	30		
				* two pieces			

Acessórios

Chave E420 para os parafusos de cabeça irius.



Nosepiece - Limitador de aperto de rebites, utilização obrigatória.



Ferramenta para centrar furos



d diameter | **L** Length | **f** flute length | **t** thickness of structure | **All measures in mm**

Example order code

DG- 146x20- 7,0

Type	L	Nose	Application range
DG-	146x20-	7,0	
DG-	146x20-	8,0	
DG-	146x20-	9,0	
DG-	146x20-	10,0	

Can be used with all cordless screw drivers available on the market.

Chave para centrar parafusos com diâmetro 5,5 mm, ZL-SX/SD-5,5/8,0



Chave para centrar furos com diâmetro 5,1 mm, ZL-5,1/7-18



Perfil auxiliar de angulo

		PFS-K-A- 10/10				
Application	Product	Type	axb	KL	Application range	
	▲ Aluminium	PFS-K-A-	10/10	≤ 10	Length of the profile: L = 2,8 m Thickness: e = 0,8 mm	
			18/18	≤ 18		
			29/29	≤ 29		
			40/40	≤ 40		
PFS-K-Aluminium						

		PFS-Q-A- 10/10				
Application	Product	Type	axb	KL	Application range	
	▲ Aluminium	PFS-Q-A-	10/10	≤ 10	Length of the profile: L = 2,8 m Thickness: e = 0,8 mm	
			18/18	≤ 18		
PFS-Q-Aluminium						

		PFR-A- 10/10				
Application	Product	Type	axb	KL	Application range	
	▲ Aluminium	PFR-A-	10/10	≤ 10	Length of the profile: L = 2,8 m Thickness: e = 0,8 mm	
			15/15	≤ 15		
			18/18	≤ 18		
PFR-Aluminium						

Perfil anti-roedores

PV-Aluminium



		PV-A- 30x30				
Application	Product	Type	hxl	KL	Application range	
	▲ Aluminium	PV-A-	30x30		Length of the profile: L = 2,5 m Thickness: e = 0,8 mm	
		PV-A-	30x40			
		PV-A-	30x50			
		PV-A-	30x60			
		PV-A-	30x70			
		PV-A-	30x90			
		PV-A-	40x100			
		PV-A-	40x120			
		PV-A-	40x140			
		PV-A-	40x160			
		PV-A-	40x180			
		PV-A-	40x200			
		PV-A-	40x220			
		PV-A-	40x240			
		PV-A-	40x260			
		PV-A-	40x280			
		PV-A-	40x300			



Contactos para informação e fornecimento

Portugal

Tel: +351 219 669 840 / +351 912 554 988

Email: pt.info@sfs.com

Espanha

T: +34 946 333 120

E: es.info@sfs.com

France

T: +33 4 75 75 44 22

E: fr.info@sfs.com

UK

T: +44 (0) 330 0555 888

E: ukenquiries@sfs.com

USA

T: +1 610 376 5751

E: us.construction@sfs.com

Canada

T: +1 905 847 5400

E: ca.info@sfs.com

Norway

T: +47 67 92 14 40

E: no.info@sfs.com

Sweden

T: +46 152 71 50 00

E: se.info@sfs.com

Finland

T: +358 9 3154 9810

E: fi.info@sfs.com

Nederland

T: +31 492 597 414

E: bnl.info@sfs.com

Polnad

T: +48 61 660 49 00

E: pl.info@sfs.com

Italy

T: +39 0434 995 1

E: it.info@sfs.com

Germany

T: +49 6171 700 20

E: de.info@sfs.com

Czech Republic

T: +420 481 354 4111

E: cz.construction@sfs.com

Estonia

T: +372 6610 600

E: ee.info@sfs.com