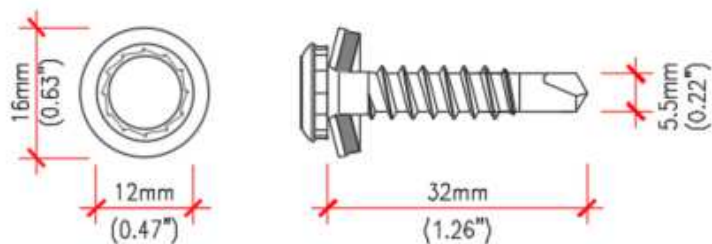


Façades ventilées en panneaux Viroc – Ossature en Acier Galvanisé

Vis et rivets pour la fixation des panneaux Viroc

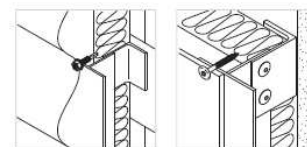
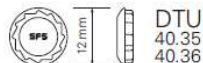
Épaisseur du panneau 12 mm

SX3/15-L12-S16-5.5x32



Application

Stainless steel fastening of steel / aluminium sheet or façade panels to steel or aluminium structure in one operation: drilling, thread forming and sealing.

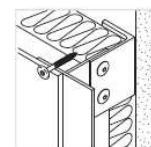
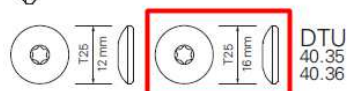
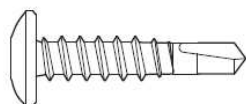


Product code	article number	VD	KL	d x L	PU	notes
SX3/15-L12-S16/1-5,5X32	1403191	3	15	5,5X32	250	

SX3/15-D16-5,5x30

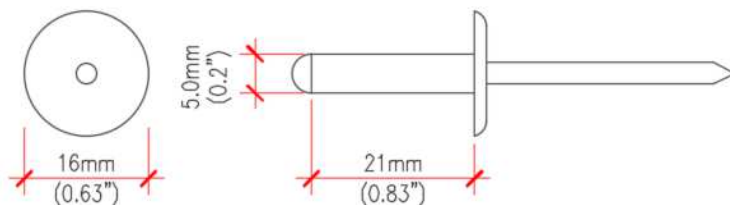
Application

Stainless steel fastening of steel / aluminium sheet or façade panels to steel or aluminium structure in one operation: drilling, thread forming and sealing.



Product code	article number	VD	KL	d x L	PU	notes
SX3/15-D12-5,5X30	1403193	3	15	5,5X30	250	
SX3/15-D16-5,5X30	1270106	3	15	5,5X30	250	

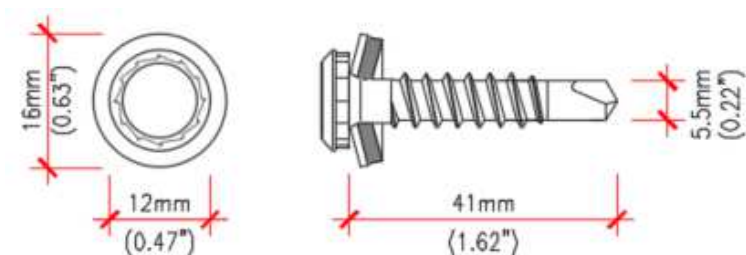
Rivet AP16-S-5.0x21



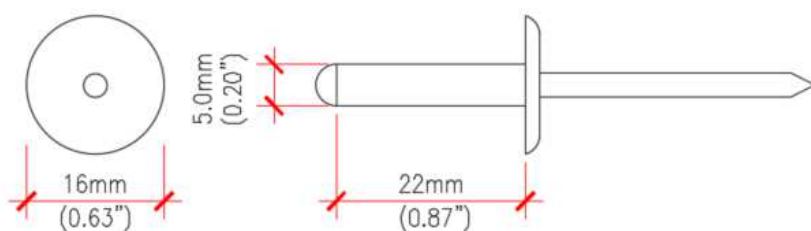
Auxiliaire : Nosepiece, utilisation obligatoire.

Épaisseur du panneau 16 mm

SX5-L12-S16-5.5x41



Rivet SS0-D15-5x22


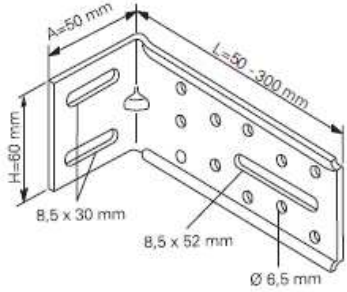


Auxiliaire : Nosepiece, utilisation obligatoire.

Ossature de support

Equerres



		B 50-T			
Application	Product	Type	L	KL	Application range
	<p>■ Carbon steel</p>	B	50-T		<p>Fixed width A of 50 mm Length L variable from 50 to 300 mm Fixed height H of 60 mm</p> <p>8.5x30 mm and 8.5xL mm slot holes Holes dia Ø 6.5</p> 
		B	60-T		
		B	70-T		
		B	80-T		
		B	90-T		
		B	100-T		
		B	110-T		
		B	120-T		
		B	130-T		
		B	140-T		
		B	150-T		
		B	160-T		
		B	170-T		
		B	180-T		
		B	190-T		
		B	200-T		
		B	210-T		
		B	220-T		
		B	230-T		
		B	240-T		
		B	250-T		
		B	260-T		
		B	270-T		
		B	280-T		
		B	290-T		
		B	300-T		

Cheville (équerre-support)

FUR-10,0x80-SS (1 un/équerre)

Application	Product	Approval	Order code				t_{fx}	h_v	Application range
			Type	d	L				
	■ Carbon steel 		FUR-	8,0x	80-SS	10	90	Anchoring depth h_{nom} min. 70 mm embedment Drill bit for concrete: Ø 8mm: SDS4-Plus-8xL Ø 10mm: SDS4-Plus-10xL	
			FUR-	8,0x	100-SS	30	110		
			FUR-	8,0x	120-SS	50	130		
			FUR-	10,0x	80-SS	10	90		
			FUR-	10,0x	100-SS	30	110		
			FUR-	10,0x	115-SS	45	125		
			FUR-	10,0x	135-SS	65	145		
			FUR-	10,0x	160-SS	90	170		
			FUR-	10,0x	185-SS	115	195		
			FUR-	10,0x	200-SS	130	210		
FUR-	10,0x	230-SS	160	240					

Vis (équerre-ossature acier)

SD 5-5,5x25 (2 un/équerre)

Application	Product	Approval	Order code					KL	Application range
			Type	VD	HD	d	L		
	■ Carbon steel 		SD	5-		5,5x	25	12	 VD max. steel: 5,0 mm t min. steel: 1,5 mm Assembly recommendations: 2 x SD5-5,5x25 for normal hole

Cheville plastique (isolant-support)



d diameter | L overall length | SD Setting depth | All measures in mm

		Order code							
		MDH- 8,0x 60							
Applications	Product	Type	d	L	SD	Application range			
		MDH-	8,0x	60	20				
		MDH-	8,0x	80	20				
		MDH-	8,0x	100	20				
		MDH-	8,0x	120	20				
				MDH-	8,0x	140	20		
				MDH-	8,0x	160	20		
				MDH-	8,0x	180*	30		
				MDH-	8,0x	200*	30		
				MDH-	8,0x	220*	30		
				MDH-	8,0x	240*	30		
				* two pieces					
						1. Drill a pilot hole 2. Set plug until head lies flush on insulation 3. Use a hammer for installation 4. MDH has to be hammered precisely onto insulation			

Outils auxiliaires

Clé E420 pour vis à tête irius



Nosepiece, utilisation obligatoire



Outil de centrage de trou



d diameter | L Length | f flute length | t thickness of structure | All measures in mm

Example order code

DG- 146x20- 7,0

Type	L	Nose	Application range
DG-	146x20-	7,0	
DG-	146x20-	8,0	
DG-	146x20-	9,0	
DG-	146x20-	10,0	

Can be used with all cordless screw drivers available on the market.


Outil de centrage de vis, diamètre 5,5 mm, ZL-SX/SD-5,5/8,0





Outil de centrage de trou, diamètre 5,1 mm, ZL-5,1/7-18



Profil auxiliaire d'angle

		PFS-K-A- 10/10				
Application	Product	Type	axb	KL	Application range	
	▲ Aluminium	PFS-K-A- 10/10		≤ 10	Length of the profile: L = 2,8 m Thickness: e = 0,8 mm	
		PFS-K-A- 18/18		≤ 18		
		PFS-K-A- 29/29		≤ 29		
		PFS-K-A- 40/40		≤ 40		
PFS-K-Aluminium 						

		PFS-Q-A- 10/10				
Application	Product	Type	axb	KL	Application range	
	▲ Aluminium	PFS-Q-A- 10/10		≤ 10	Length of the profile: L = 2,8 m Thickness: e = 0,8 mm	
		PFS-Q-A- 18/18		≤ 18		
PFS-Q-Aluminium 						

		PFR-A- 10/10				
Application	Product	Type	axb	KL	Application range	
	▲ Aluminium	PFR-A- 10/10		≤ 10	Length of the profile: L = 2,8 m Thickness: e = 0,8 mm	
		PFR-A- 15/15		≤ 15		
		PFR-A- 18/18		≤ 18		
PFR-Aluminium 						

Profil anti-rongeurs

PV-Aluminium



		PV-A- 30x30				
Application	Product	Type	hxl	KL	Application range	
	▲ Aluminium	PV-A-	30x30		Length of the profile: L = 2,5 m Thickness: e = 0,8 mm	
		PV-A-	30x40			
		PV-A-	30x50			
		PV-A-	30x60			
		PV-A-	30x70			
		PV-A-	30x90			
		PV-A-	40x100			
		PV-A-	40x120			
		PV-A-	40x140			
		PV-A-	40x160			
		PV-A-	40x180			
		PV-A-	40x200			
		PV-A-	40x220			
		PV-A-	40x240			
		PV-A-	40x260			
		PV-A-	40x280			
		PV-A-	40x300			



Contacts pour information et approvisionnement

France

T: +33 4 75 75 44 22

E: fr.info@sfs.com

Portugal

T: +351 219 669 840

E: pt.info@sfs.com

España

T: +34 946 333 120

E: es.info@sfs.com

UK

T: +44 (0) 330 0555 888

E: ukenquiries@sfs.com

USA

T: +1 610 376 5751

E: us.construction@sfs.com

Canada

T: +1 905 847 5400

E: ca.info@sfs.com

Norway

T: +47 67 92 14 40

E: no.info@sfs.com

Sweden

T: +46 152 71 50 00

E: se.info@sfs.com

Finland

T: +358 9 3154 9810

E: fi.info@sfs.com

Nederland

T: +31 492 597 414

E: bnl.info@sfs.com

Polnad

T: +48 61 660 49 00

E: pl.info@sfs.com

Italy

T: +39 0434 995 1

E: it.info@sfs.com

Germany

T: +49 6171 700 20

E: de.info@sfs.com

Czech Republic

T: +420 481 354 4111

E: cz.construction@sfs.com

Estonia

T: +372 6610 600

E: ee.info@sfs.com